

TCR TECORA®
POLLUTION CHECK



In accordance with:
CEN/TS 13649 2014

Constant flow sampler

EASYGAS PLUS

EASYGAS PLUS sampler completes **TCR Tecora®** product range for gaseous compounds sampling and fulfills to the normative regarding EN/TS 13649:14 "Determination of the mass concentration of individual gaseous organic compounds. Sorptive sampling method followed by solvent extraction or thermal desorption" technical specification.

EASYGAS PLUS can also be used in all applications of sampling with vials (eg: EN 14662-2, Ambient air quality. Standard method for measurement of benzene concentrations. Pumped sampling followed by solvent desorption and gas chromatography).

Pump speed adjustment by microprocessor card for maintaining constant flow and flow rate reading via the display 5.5" touch screen. Data logger for data storage.

The angular metal protections, installed on the whole range of instruments, avoid damage to the chassis in classic points of accidental contact during normal activities, eliminate mechanical flexures of the structure and became easily / economically replaceable.

Isokinetic! connecting **FLOWTEST ST** to **EASYGAS PLUS**, the sampler becomes an efficient system with isokinetic control of the flow rate.

AUTOMATIC CONTROL OF THE MAIN / DERIVATIVE LINE. Connecting **EASYGAS PLUS** to **ISOSTACK G4**, **BRAVO X** and **BRAVO DUO** via USB cable, it is possible to keep constant flow rate ratio during isokinetic sampling.

External LED indicators, visible at long distance, indicate the status of sampler operation.

Integration of temperature probe and line regulation directly on **EASYGAS PLUS** (optional).

This means the advantage of not having to transport the adjustment case to the sampling site. Less weight and less space needed!

EASYGAS special version with max. Flow rate 12 l / min and data logger for data acquisition (allows H₂O sampling compliant to EN 14790:17).



Main Features

- Constant flow portable device;
- Sampling of gaseous compounds by means of adsorbent vials with lab solvent or thermal extraction;
- Equipped with silica gel trap and internal circuit protection filter;
- Gas temperature reading entering the volumetric meter via color display;
- Together with EASYGAS PLUS the X-TDP probe completes the sampling system, allowing the removal of gaseous compounds also at high temperatures. It is equipped, for this reason, with a sampling tube and a filter holder heated by electronic regulator (EN/TS 13649 compliant);
- Internal battery (about 10 hours autonomy application dependent);
- Volumetric counter for sampling line: uncertainty less than $\pm 2\%$;
- Flow rate between 0.2 and 2 L / min (other flow rates on request);
- Flow rate stability even at low ranges by means of a by-pass valve;
- Lack of voltage and display on report;
- Vacuum gauge for functional checks and leak test;
- Available power supplies:
230VAC | 110VAC | 12VDC | (Internal battery optional);
- Materials: AISI 316 stainless steel • Titanium • Teflon



X-TDP Probe

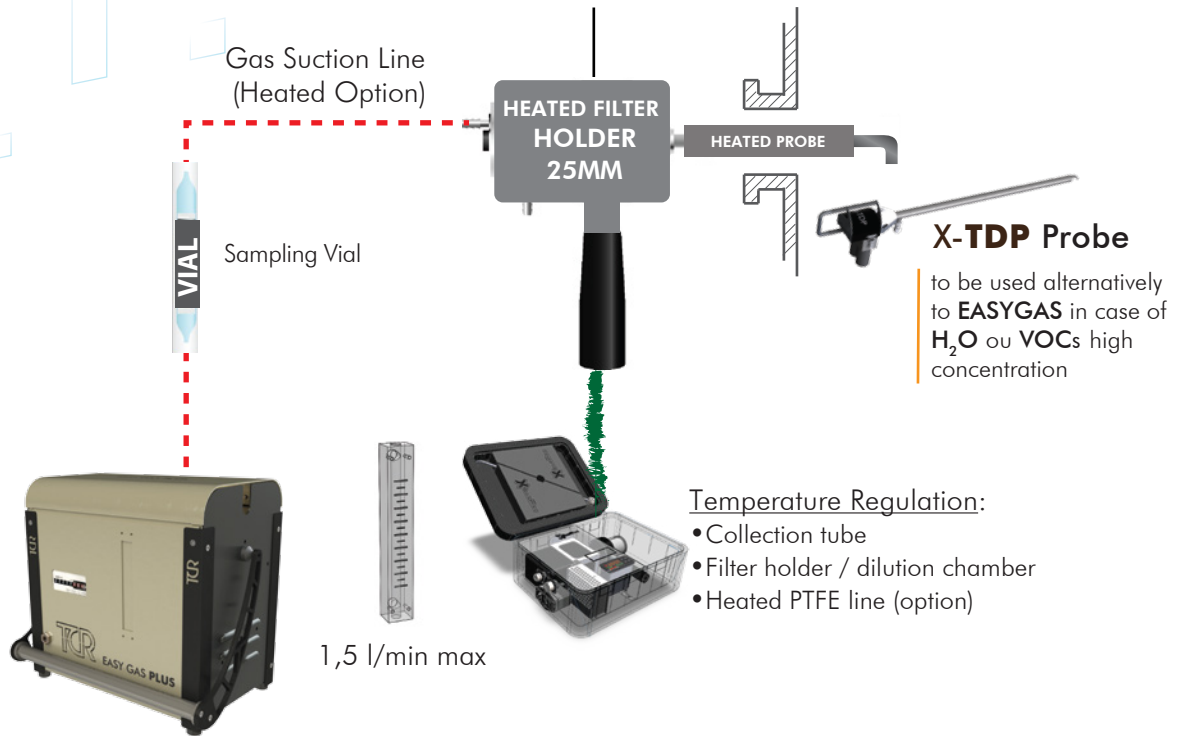
- ✓ Small and light sampler
- ✓ Battery powered
- ✓ Guaranteed flow accuracy and precision





EASYGAS PLUS

“Compact with high performance, light and cheap *the perfect mix!*”



New Keyboard



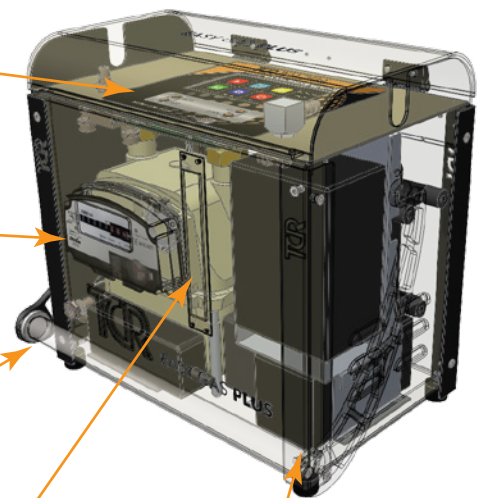
Color display and membrane keyboard

Volumetric Counter

Retractable handle

Flow meter

Angular metal protections



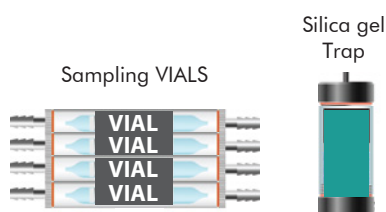


EASYGAS PLUS

TECHNICAL FEATURES

Pump Type	Diaphragm (corrosion proof)
Maximum flow rate (with no restrictions)	Max 2 l/min (customizable rates)
Flow range	Encoder on DGM
Dry gas meter (DGM) range	0.016 – 2.5m ³ h, acc. Class 1,5
Gas flow adjustment	PWM Electronic Control
Dry gas meter working pressure	-50 ÷ 70 °C Acc. 1 °C Ris. 0.1 °C
Humidity sensor range	10 ÷ 99 % UR (Optional)
Sampler control	Electronic Microprocessor control
Weight	7 Kg
Dimensions	200 x 315 x 311 mm
Power Supply	230 VAC ± 10% 50/60 Hz 12V DC Internal Battery
Power Consumption	200W

EASYGAS PLUS



X-TDP PROBE

